



Learn Devon

Accountability Statement

2023 - 2024

Learn Devon Purpose:

- Our learning supports a reduction in social inclusion and improved social mobility. We will make a difference, supporting individuals who are disadvantaged through previous educational experience, life circumstances / social background or geography to progress towards and within employment and to support societal inclusion. We will build a reputation for integrity, innovation and delivering value.
- We deliver both formal and informal learning through direct delivery to adults aged over 19 up to and including level 2 where qualifications are being delivered.
- We support progression supported by wrap-around advice and guidance to deliver effective, meaningful outcomes for our learners.
- We support wider DCC services to deliver their objectives and contribute to DCC delivering on its core priorities and wider strategies to support the citizens of Devon through an innovative, responsive offer.

Context and Place:

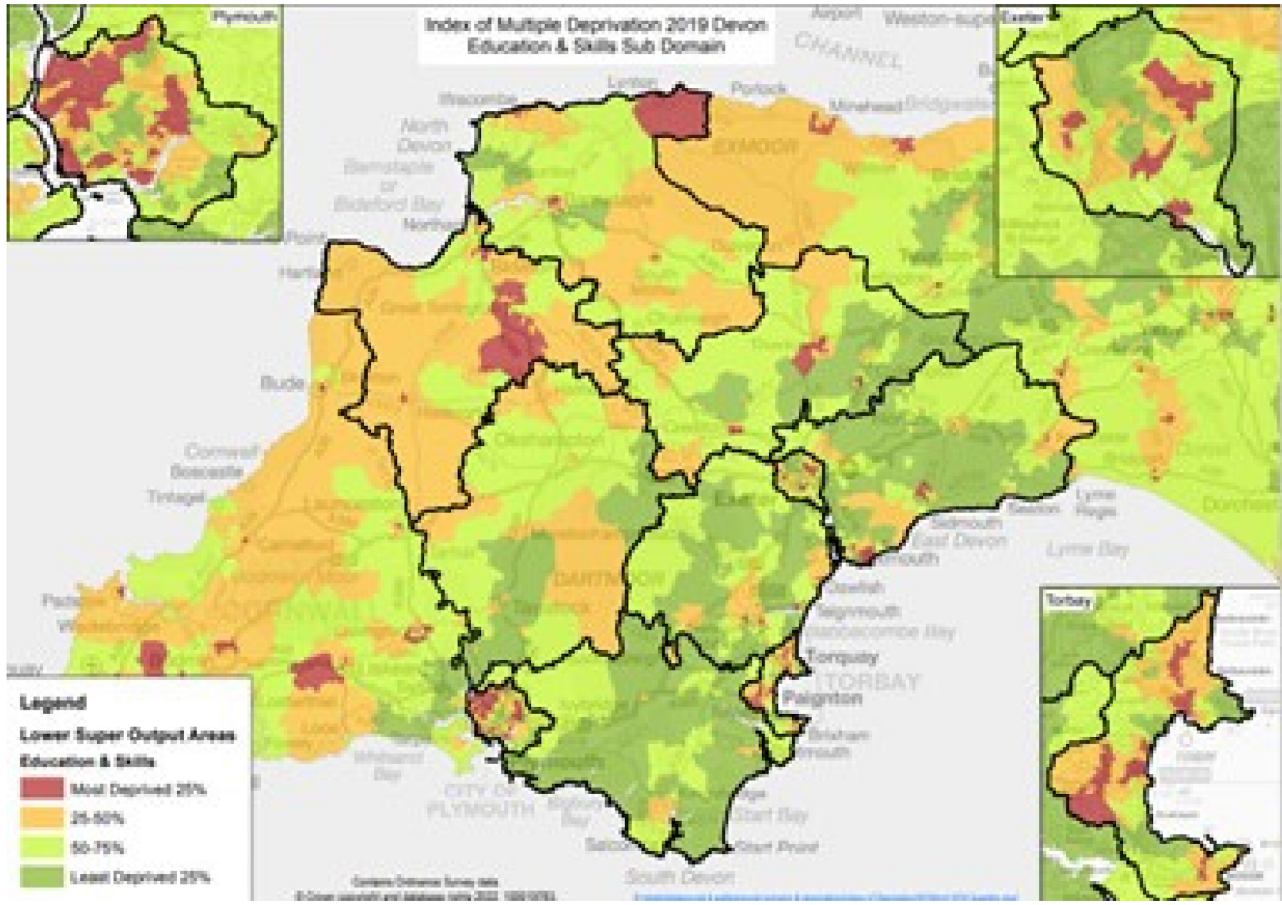
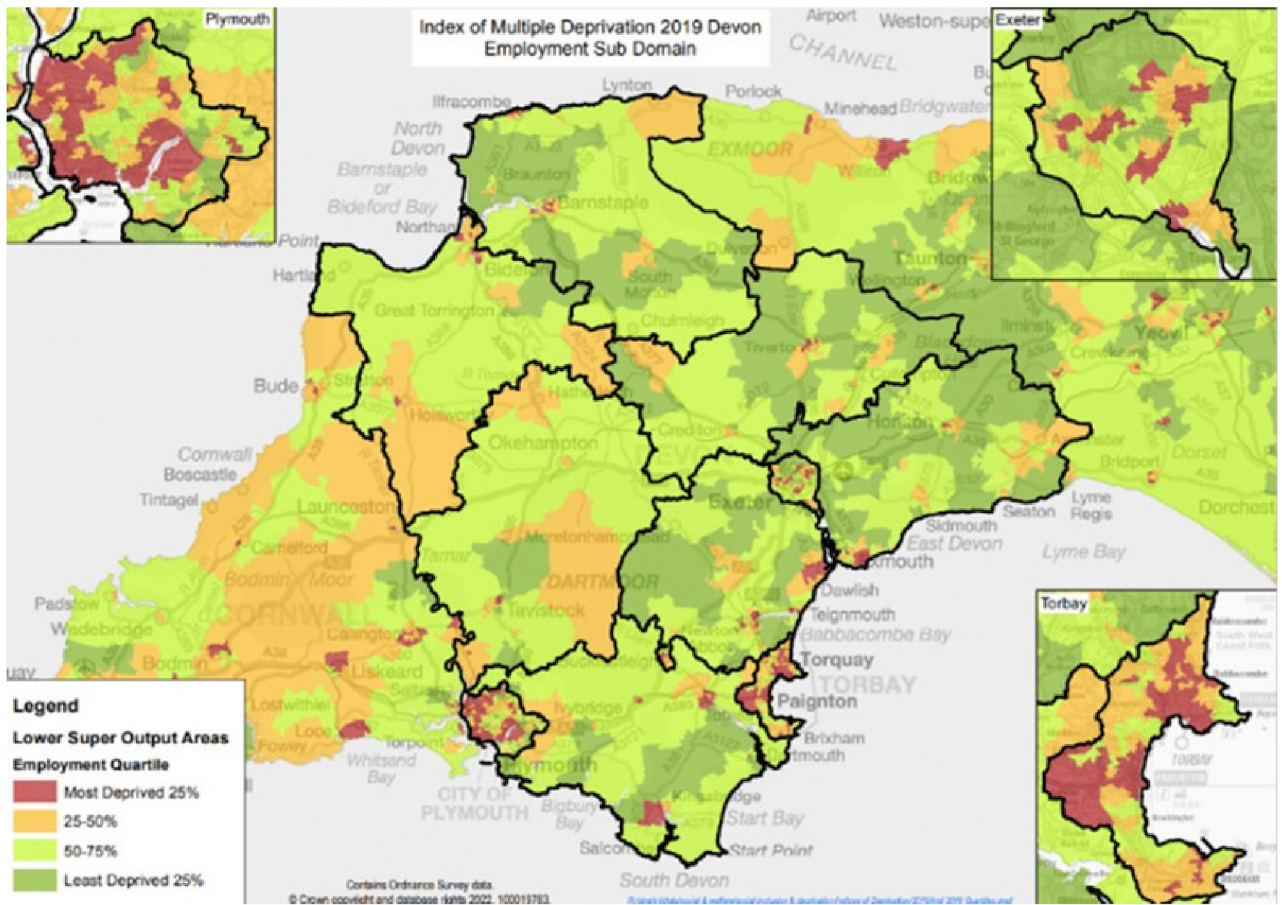
Devon is not a deprived county when compared to England as a whole. A quality-of-life report published by the Thriving Places Index said that our county provided 'more of the conditions necessary for well-being than any other authority in the country. But three electoral wards (Ilfracombe Central, Barnstaple Central and Forches and Whiddon Valley) are in the most deprived 10% of all areas in England, and another 18 wards are in the 20% most deprived. Around 4% of Devon's population live in these areas. There are large gaps in educational attainment in Devon. There are also inequalities in health, with a 15-year gap in life expectancy between central Ilfracombe (75 years) and Exmouth Liverton (90 years). One in eight children lives in poverty in Devon, with a large gap between the highest (33.3% in the Forches area, Barnstaple) and lowest (1.1% in Teignmouth Road, Dawlish) rates.



Devon has an ageing and growing population with proportionately more older people than England as a whole. The population is set to grow by 88,000 (11%) over the next 20 years, with low growth in under 65s (2%), with considerable growth in the older population (94% increase in people aged 85 and over). More adults have complex health needs and are living with them for longer. Life expectancy has remained marginally similar over the last decade with people living their remaining 10 to 15 years of life in poorer health. This gap is starker across areas with higher deprivation as well as minority groups and different communities. Recruiting and retaining a sufficient workforce is increasingly difficult across the country, seriously impacting on the availability of services and the effectiveness of our health and care system. Resolving these workforce challenges is key to the Council's ambition, including our digital future, skills, sustainable travel, carbon-reduction and climate change, family and carer support, community leadership and the wider economy.

Exeter University's Centre for Social Mobility's report found:

- Generally good employment rates but low earnings and poor pay: for example, 41% of jobs in Torridge, Devon, pay below the national living wage – the second highest rate in the country
- Rates of child poverty after housing costs around or above average in many areas, indicating a substantial working poor population
- There is more to disadvantage than financial poverty as measured by rates of Free School Meals status, which are generally low across the region
- Higher than average rates of poor mental health outcomes for both children and adults
- Fewer schools rated Good or Outstanding, particularly in deprived areas
- Recruitment, retention and training challenges for isolated and remote schools, and lower levels of school funding and teacher pay
- Long travel times incurred in pursuing further education or work: for example, for students from Dulverton in West Somerset, attending their nearest FE college means a 12 hour+ day; there is a 27% drop out rate
- Fewer professional jobs available in most areas and lower returns to education, indicating a low skills equilibrium for young workers



Approach to developing the annual accountability statement

Learn Devon is a part of a wider skills system supporting Devon and enjoys strong relationships with a range of stakeholders whose actions and activity shape and impact on the offer being made. Each strand is considered against the desired activity and impact required of the stakeholders.

- A review of the outcomes of the Devon & Plymouth and Somerset Chambers of Commerce, shared initial drafts of LSIP for the Heart of the South West have confirmed that:

'The LSIP process enables employers and providers to work together to understand employers' skills needs and how these could be addressed through existing provision and changes to provision locally" "Focus is aligned to HotSW key priority sectors - that can gain most traction and maximise impact - offering regional coverage, building on Local Skills Report & LEP priorities:

- Energy Futures – renewables, nuclear, green construction, clean propulsion
 - Engineering Futures – aerospace, marine, advanced manufacturing, high-tech cluster, photonics and microelectronics
 - Digital Futures – cyber security, data analytics, health technology, creative development, agri-tech"
- Participation in the review of the strategic role of Learn Devon in supporting DCC wider strategy and stated annual priorities
 - Participation in the development and future implementation of the DCC economic skills strategy
 - Consideration of the impact and asks of the devolution deal, the work of the Combined Authorities, particularly the skills strand and AEB funding
 - Ongoing collaboration with the main FE colleges operating in Devon to support learners entry to higher-level FE provision and the emergence of joint planning in Exeter as a model of delivery providing wider geographical and demographic coverage
 - Support of DCC Multiply activity through both direct delivery and quality assurance provides opportunity to work collaboratively with a wide range of providers including those who have not traditionally delivered AEB delivery, helping to reach wide community and build capacity to improve maths offer across Devon.

- As part of the DCC Economy Enterprise and Skills Directorate, staff are sighted on a range of initiatives including Bootcamps, UKCRF provision and the development of the Freeport in Plymouth and South Hams, working alongside the Youth Hub and delivering the Ability not Disability programme - informing the development and delivery of the offer
- As a member of the Skills Advisory Panel, regular networking and consideration of the HoSW Skills Report helps inform the offer, together with collaborative activity across providers and employers.
- Local Employment Data gained through a strong working relationship with DWP at a regional and local level together with regular input from the DCC EES Strategic Intelligence team, supports the development of new initiatives to respond to local pressures
- A review of the Learn Devon self-assessment report providing context for the organisation and the environment in which it operates together with an understanding of the realistic nature of the offer
- Regular meetings with the local provider of the National Careers Service informs the offer and needs of those engaging with the programme



Contribution to national regional and local priorities

Activity	Action	Contribution to national regional and local priorities
<p>English supporting skills development and qualifications up to GCSE Level - supporting entry to employment, FE, HE, and community cohesion</p>	<p>We will grow English provision through qualification delivery, building progression into the offer through family learning, longer qualifications and working with FE and HE institutions to support access to higher level qualification courses. We will support over 350 learners on qualification courses</p>	<p>The offer supports the actions identified by the Social Mobility Commission: “From a social mobility point of view, this is about how we create and open opportunity for high skilled and well paid employment, but is also about finding some new solutions to our biggest national problem: the number of young people and adults with low levels of formal qualifications. In large part this is about addressing deficiencies in basic skills, including literacy and numeracy – as this is a major impediment to the progress of individuals, and the capacity of the economy to innovate and improve productivity”</p> <p>The offer supports regional priorities identified in the Heart of the South West Local Skills Report 2021 – 2022: “Ensure that every individual can access the skills and training they need to achieve their own potential”</p> <p>The offer supports Devon County Council’s strategic plan and priorities:</p> <ul style="list-style-type: none"> Investing in Devon’s economic recovery - Work with at risk sectors to widen skills and support business development Tackle poverty and inequality - Promote services that increase resilience, self-reliance and independence & Promote community cohesion Helping communities to be safe, connected and resilient - Tackle social isolation, particularly among older, younger and disabled people, and those with a long-term illness & Work with communities to enable them to come together to tackle shared challenges & Keep people safe by improving community safety and targeting domestic violence and abuse, hate crime, modern slavery and other priority crimes & Engage directly with people in meaningful ways and encourage participation in decisions that affect them
<p>Maths supporting skills development and qualifications up to GCSE Level - supporting entry to employment, FE, HE, and community cohesion</p>	<p>We will support over 900 learners in the next academic year through effective promotion of the offer, delivering multiply as an engagement / development activity seeking progression into the offer in year 2.</p>	
<p>Digital skills supporting improved social mobility and employment opportunities through skills development and qualifications</p>	<p>We will grow the enrolments and learners on the programme through two routes:</p> <ul style="list-style-type: none"> We will support over 1000 learners through the offer. We will mainstream the Digital Devon offer (one to one informal support and advice) across the county, targeting disadvantaged communities and groups to complement the anchor offers as a progression route / skills builder route. The offer will support inclusion for communities to engage with health, welfare, education, employment and social inclusion needs. We will offer online skills development around specific work packages at lower levels (eg MS Office). 	

Activity	Action	Contribution to national regional and local priorities
<p>ESOL supporting integration with the community and employment</p>	<p>We will offer formal and informal courses to support the wider Council and District needs to support Ukrainian visitors and Asylum seekers, together with wider employment skills supporting health and social care sectors. This will be funded through ESFA and DCC / external.</p>	<p>The offer supports Devon County Council's strategic plan and priorities:</p> <ul style="list-style-type: none"> • Investing in Devon's economic recovery - Work with at risk sectors to widen skills and support business development. • Tackle poverty and inequality - Promote services that increase resilience, self-reliance and independence & Promote community cohesion. • Helping communities to be safe, connected and resilient - Tackle social isolation, particularly among older, younger and disabled people, and those with a long-term illness • Work with communities to enable them to come together to tackle shared challenges & Keep people safe by improving community safety and targeting domestic violence and abuse, hate crime, modern slavery and other priority crimes & Engage directly with people in meaningful ways and encourage participation in decisions that affect them
<p>Vocational - supporting entry into the core Devon sectors including employment skills</p>	<ul style="list-style-type: none"> • We will offer teaching and learning in schools qualifications to over 20 learners in the first year to support entry into the industry. Support skills delivery and progression around short interventions to support entry, wrap-around delivery mechanisms. • We will identify pathways into sectors and FE colleges / providers through online and face to face delivery qualifications up to level 2 across the key sectors identified in the DCC Sector Skills strategy and support over 500 learners. 	

Activity	Action	Contribution to national regional and local priorities
<p>Community Engagement including Family Learning supporting families to learn together to improve skills of learning, English and maths</p>	<ul style="list-style-type: none"> • We will support over 1000 learners. • We will re-invigorate the offer tackling topical issues – eg cost of living, green issues, children’s development, targeted at the most disadvantaged communities identified through local intelligence and IMD analysis. We will use Multiply to support Family Learning offer particularly where we are seeking to build momentum. • We will transition the Arts and Craft offer to support Family Learning / engagement in key locations and signpost into further learning. 	<p>The offer supports DCC Strategy for Growth 2020 – 2030, Delivering Sector Based Growth in Devon:</p> <p>“Extending Social Mobility – Social mobility within parts of Devon is amongst the lowest in the UK, with educational outcomes for those furthest from poorer and more complex backgrounds being significantly worse than amongst peer areas”</p> <p>Access to - Transformational Sectors (Advanced Manufacturing and Engineering, Environmental Technologies and Industries, and Health and Life Sciences) Foundation Sectors (Digital and Creative Industries, Construction, Transport and Logistics, Retail, Financial and Professional Services, the Voluntary and Community Sector) Challenge Sectors (Health and Social Care, Farming, Fishing and Food, and Tourism and Leisure)</p>
<p>For adults with disabilities to support independence and employment opportunities</p>	<ul style="list-style-type: none"> • We will offer ability not disability style delivery to support progression, independence and employment opportunities working with local business communities and DCC services (RFI teams, EES Work Hubs, EES Inclusion Officer) to promote access, DWP job coaches to support access. • We will halt / repurpose the matters courses - supporting and promoting volunteering opportunities where ‘clubs’ are a valuable option. • We will support over 200 learners. 	<p>The offer supports the Devon & Plymouth and Somerset Chambers of Commerce, LSIP for the Heart of the South West “Focus is aligned to HotSW key priority sectors”</p>

Corporation statement

Learn Devon is part of the Economy, Enterprise and Skills Directorate of Devon County Council. Governance is provided through the DCC corporate activity and requirements.

This Accountability Agreement is endorsed by Keri Denton on behalf of the Council.

For more information about the offer:

www.learndevon.co.uk/about

Supporting documentation

[Devon County Council Strategic Plan 2021 – 2025](#)

[Heart of the South West LEP Skills Report 2021 - 2024](#)

[Devon County Council - Economy & Enterprise](#)

[Devon County Council Adult and Community Learning Ofsted Report - February 2017](#)

